



Property Information:

Property Type: Sub-Grade

Professional Office Space

Available Size: 1700 SF

Date Available: Immediate

Building: Ready for build out

Parking: Ample shared parking

Signage: Monument Sign

Listing Features:

- Proximal to EIRMC
- Prime medical location below Dr. Greenwald's office
- Common entrance
- ADA accessibility with elevator
- High ceilings
- Ample natural lighting



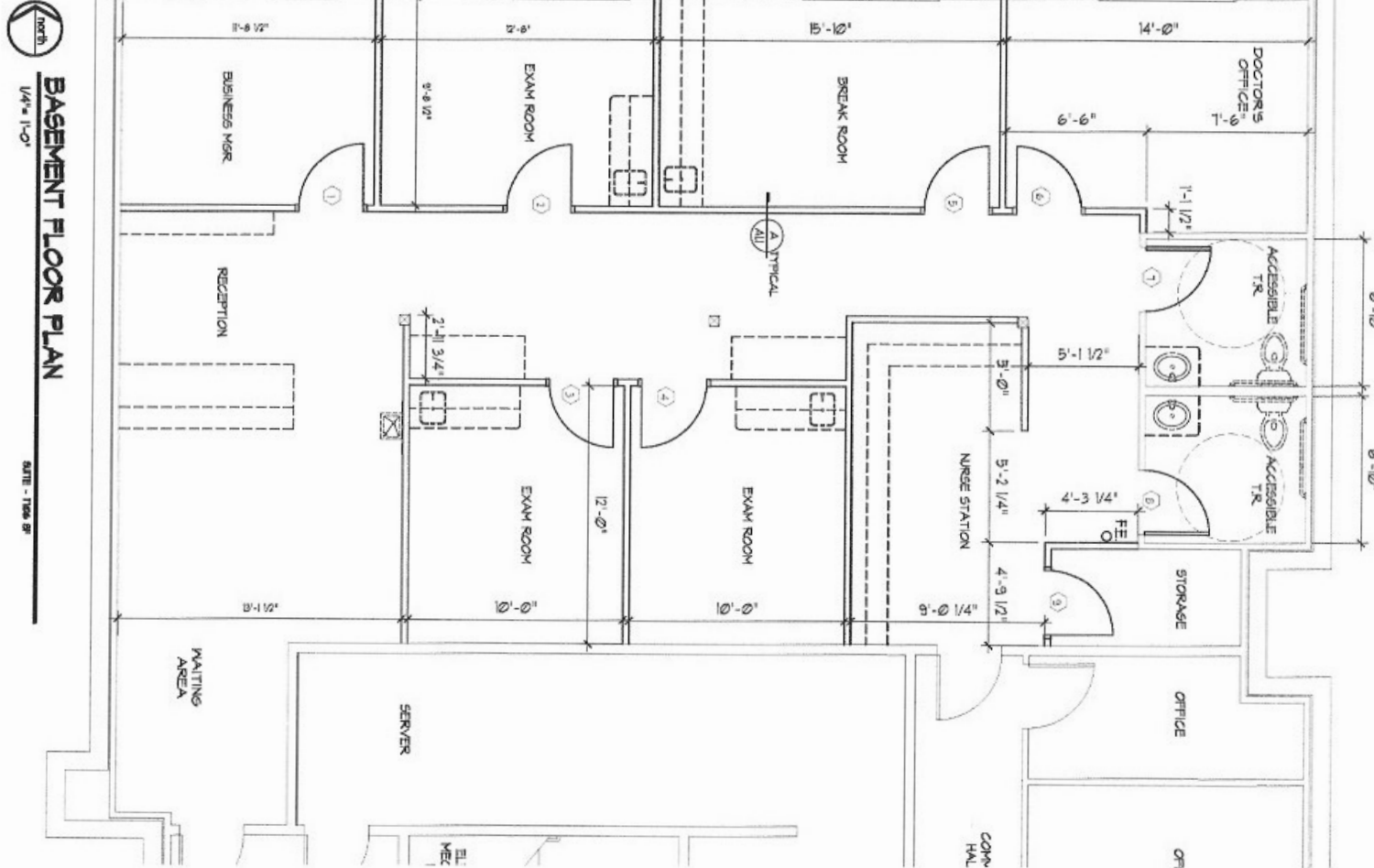
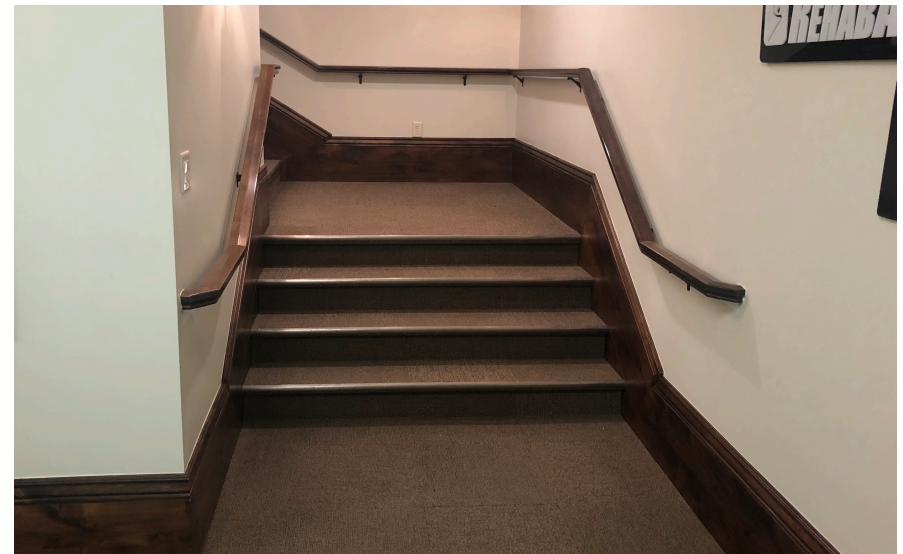


Image represents potential floor plan layout. Space is currently ready for buildout.



Steven Frei
208.339.1052
steve@idahobp.com

Brent Butikofer
208.589.1222
brent@idahobp.com

Office: 208.881.9694
Fax: 208.346.8755
www.idahobp.com