



CONTACT

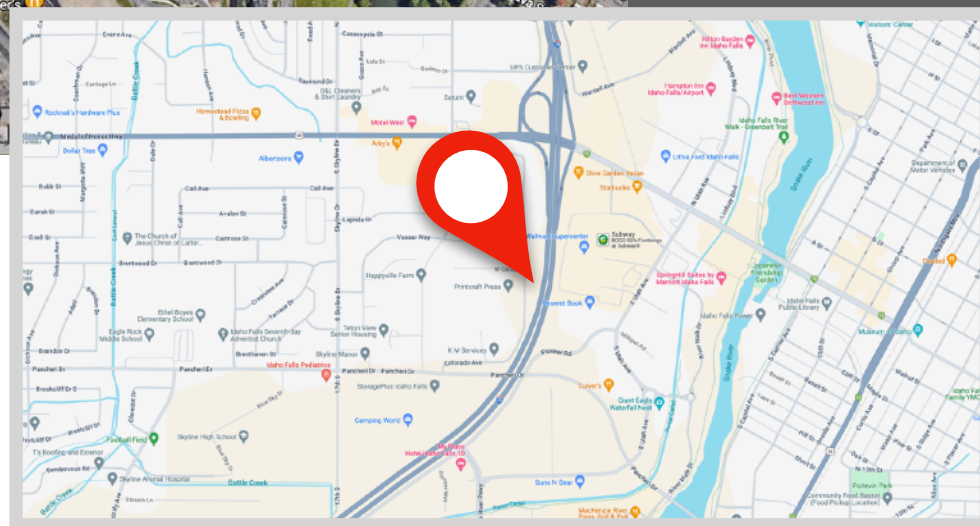
Steven Frei
208.339.1052
steve@idahobp.com

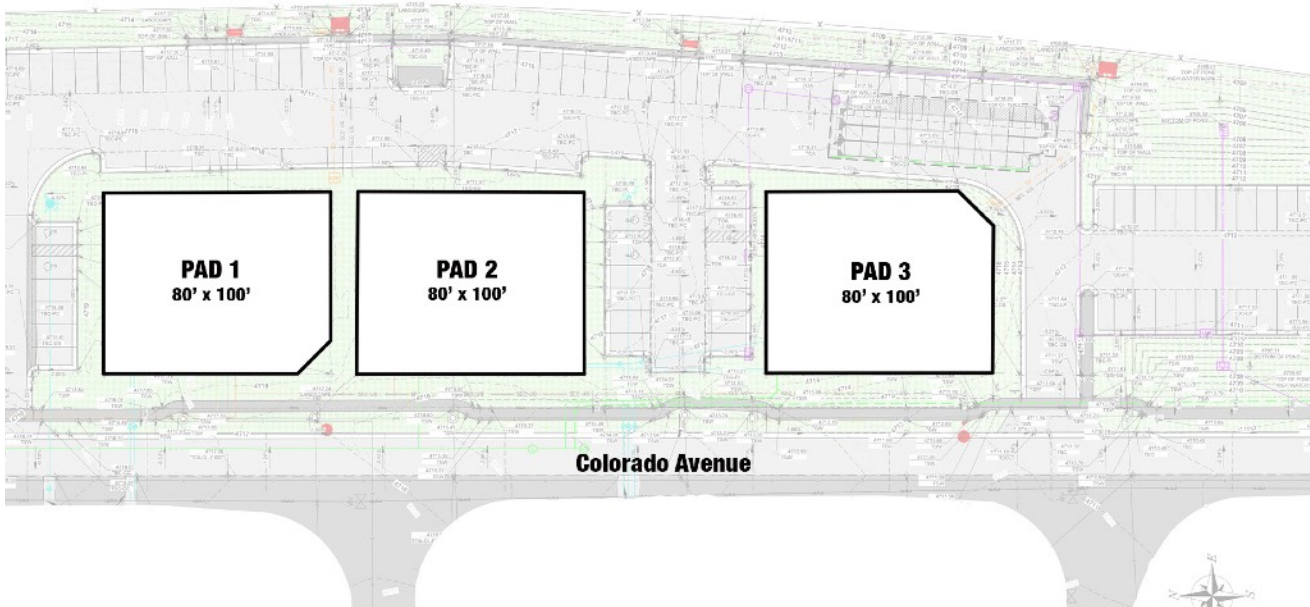
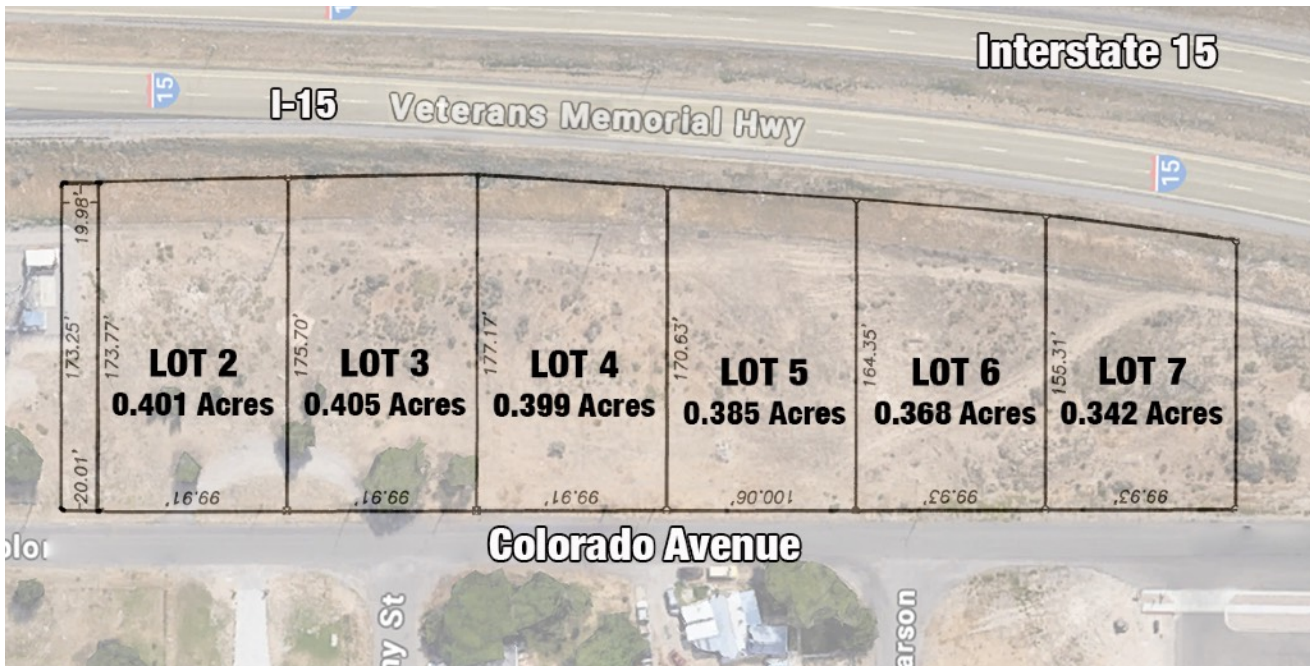
Brent Butikofer
208.589.1222
brent@idahobp.com

Office: 208.881.9694
www.idahobp.com

THE PROPERTY:

Three 80'x100' building pads for multi-family development within the City of Idaho Falls. City utilities existing on site. Preliminary site plan and engineering work completed and available on request. Allocated for 60 total units. Approximately 1,142 SF per unit.





Property Information:

Property Type: Multi-family land

Number of Pads: 3

Building Pad Size: 80'x100'

Unit Size: Approx. 1,142 SF

Total Land Size: Approx. 2.39 Acres

Property Features:

- Close to major national retailers
- Easy access to I-15
- 3 - 80'x100' building pads
- Projected for 60 total units
- Approx. 1,142 SF per unit
- Contiguous ground available for additional units or storage needs
- 1 1/2 hours from Yellowstone National Park

CONTACT

Steven Frei - 208.339.1052
steve@idahobp.com

Brent Butikofer - 208.589.1222
brent@idahobp.com

Office: 208.881.9694
www.idahobp.com